



# Islet-1 Monoclonal Antibody

<b>Catalog No</b>	YP-Ab-00993
<b>Isotype</b>	IgG
<b>Reactivity</b>	Human
<b>Applications</b>	WB;IHC;IF;ELISA
<b>Gene Name</b>	ISL1
<b>Protein Name</b>	Insulin gene enhancer protein ISL-1
<b>Immunogen</b>	Purified recombinant fragment of human Islet-1 expressed in E. Coli.
<b>Specificity</b>	Islet-1 Monoclonal Antibody detects endogenous levels of Islet-1 protein.
<b>Formulation</b>	Ascitic fluid containing 0.03% sodium azide,0.5% BSA, 50%glycerol.
<b>Source</b>	Monoclonal, Mouse
<b>Purification</b>	Affinity purification
<b>Dilution</b>	Western Blot: 1/500 - 1/2000. Immunohistochemistry: 1/200 - 1/1000. Immunofluorescence: 1/200 - 1/1000. ELISA: 1/10000. Not yet tested in other applications.
<b>Concentration</b>	1 mg/ml
<b>Purity</b>	≥90%
<b>Storage Stability</b>	-20°C/1 year
<b>Synonyms</b>	ISL1; Insulin gene enhancer protein ISL-1; Islet-1
<b>Observed Band</b>	
<b>Cell Pathway</b>	Nucleus .
<b>Tissue Specificity</b>	Expressed in subsets of neurons of the adrenal medulla and dorsal root ganglion, inner nuclear and ganglion cell layers in the retina, the pineal and some regions of the brain.
<b>Function</b>	function: Binds to one of the cis-acting domain of the insulin gene enhancer.,similarity: Contains 1 homeobox DNA-binding domain.,similarity: Contains 2 LIM zinc-binding domains.,tissue specificity: Expressed in subsets of neurons of the adrenal medulla and dorsal root ganglion, inner nuclear and ganglion cell layers in the retina, the pineal and some regions of the brain.,
<b>Background</b>	This gene encodes a member of the LIM/homeodomain family of transcription factors. The encoded protein binds to the enhancer region of the insulin gene, among others, and may play an important role in regulating insulin gene expression. The encoded protein is central to the development of pancreatic cell lineages and may also be required for motor neuron generation. Mutations in this gene have been associated with maturity-onset diabetes of the young. [provided by RefSeq, Jul 2008],



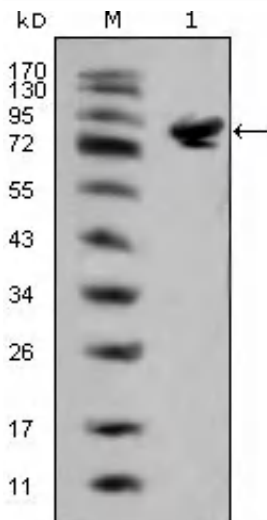
**matters needing attention**

Avoid repeated freezing and thawing!

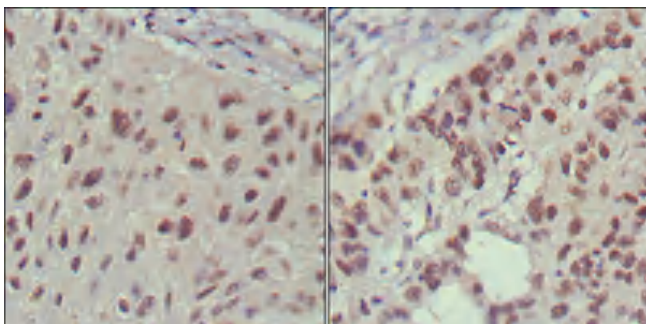
**Usage suggestions**

This product can be used in immunological reaction related experiments. For more information, please consult technical personnel.

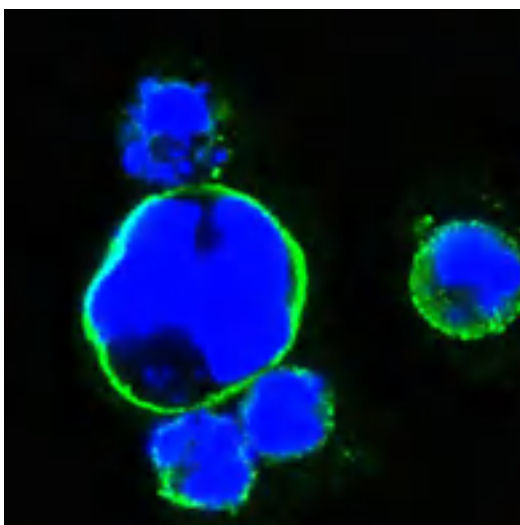
**Products Images**



Western Blot analysis using Islet-1 Monoclonal Antibody against full-length ISL1 (aa1-349)-hlgGFc transfected HEK293 cell lysate(1).



Immunohistochemistry analysis of paraffin-embedded human lung cancer (left) and cervical carcinoma (right), showing nuclear localization with DAB staining using Islet-1 Monoclonal Antibody.



Confocal immunofluorescence analysis of HEK293 cells trasfected with full-length ISL1-hlgGFc using Islet-1 Monoclonal Antibody (green). Blue: DRAQ5 fluorescent DNA dye.